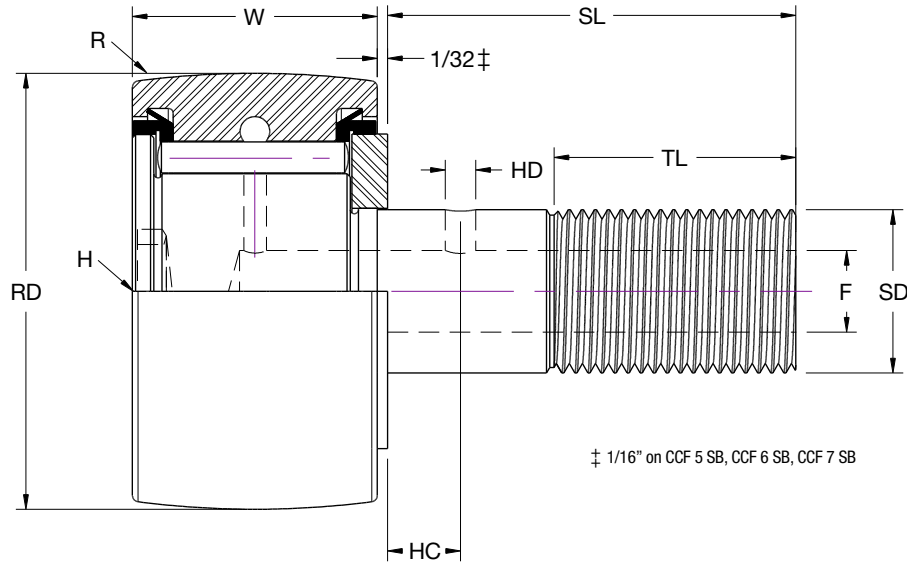


Cam Followers

CCF-SB SERIES

Crowned O.D., Sealed, Hex Holes • Measurements in Inches



Axis Part Number	Roller Dia	Roller Width	Stud Dia	Stud Length	Min. Perfect Thread Length	Fine Threads	Oil Hole Center	Oil Hole Dia.	Lube Fitting Size	Min Boss Dia.	Housing Bore Dia	Recom. Clamping Torque ¹	Max Static Capacity	Basic Dyn Capacity	Limiting Speed	Crown Radius	Hex Wrench Size
	RD	OW	SD	SL	TL		HC	HD	F		±.0002/-.0003	Lbs-In	Lbs	Lbs	RPM	R	H
CCF 1/2 N SB	0.5000	0.3440	0.1900	1/2	1/4	10-32				19/64	0.1903	15	720	620	5100	6	1/8
CCF 1/2 SB	0.5000	0.3750	0.1900	5/8	1/4	10-32				19/64	0.1903	15	790	680	5100	7	1/8
CCF 9/16 SB	0.5625	0.3750	0.1900	5/8	1/4	10-32				19/64	0.1903	15	790	680	5100	7	1/8
CCF 5/8 N SB	0.6250	0.4060	0.2500	5/8	5/16	1/4-28				23/64	0.2503	35	1085	930	4300	7	1/8
CCF 5/8 SB	0.6250	0.4375	0.2500	3/4	5/16	1/4-28				23/64	0.2503	35	1215	955	4300	8	1/8
CCF 11/16 SB	0.6875	0.4375	0.2500	3/4	5/16	1/4-28				23/64	0.2503	35	1215	955	4300	8	1/8
CCF 3/4 SB	0.7500	0.5000	0.3750	7/8	3/8	3/8-24	1/4	3/32	3/16	1/2	0.3753	95	2065	1660	3400	10	3/16
CCF 7/8 SB	0.8750	0.5000	0.3750	7/8	3/8	3/8-24	1/4	3/32	3/16	1/2	0.3753	95	2065	1660	3400	10	3/16
CCF 1 SB	1.0000	0.6250	0.4375	1	1/2	7/16-20	1/4	3/32	3/16	41/64	0.4378	250	3060	2225	2900	12	1/4
CCF 1 1/8 SB	1.1250	0.6250	0.4375	1	1/2	7/16-20	1/4	3/32	3/16	41/64	0.4378	250	3060	2225	2900	12	1/4
CCF 1 1/4 SB	1.2500	0.7500	0.5000	1 1/4	5/8	1/2-20	5/16	3/32	3/16	49/64	0.5003	350	4250	3930	2400	14	1/4
CCF 1 3/8 SB	1.3750	0.7500	0.5000	1 1/4	5/8	1/2-20	5/16	3/32	3/16	49/64	0.5003	350	4250	3930	2400	14	1/4
CCF 1 1/2 SB	1.5000	0.8750	0.6250	1 1/2	3/4	5/8-18	3/8	3/32	3/16	57/64	0.6253	650	5640	4840	2000	20	5/16
CCF 1 5/8 SB	1.6250	0.8750	0.6250	1 1/2	3/4	5/8-18	3/8	3/32	3/16	57/64	0.6253	650	5640	4840	2000	20	5/16
CCF 1 3/4 SB	1.7500	1.0000	0.7500	1 3/4	7/8	3/4-16	7/16	3/32	3/16	1 3/64	0.7503	1250	7920	6385	1700	20	5/16
CCF 1 7/8 SB	1.8750	1.0000	0.7500	1 3/4	7/8	3/4-16	7/16	3/32	3/16	1 3/64	0.7503	1250	7920	6385	1700	20	5/16
CCF 2 SB	2.0000	1.2500	0.8750	2	1	7/8-14	1/2	1/8	3/16	1 13/64	0.8753	1500	10570	8090	1500	24	7/16
CCF 2 1/4 SB	2.2500	1.2500	0.8750	2	1	7/8-14	1/2	1/8	3/16	1 13/64	0.8753	1500	10570	8090	1500	24	7/16
CCF 2 1/2 SB	2.5000	1.5000	1.0000	2 1/4	1 1/8	1-14	9/16	1/8	3/16	1 5/16	1.0003	2250	16450	11720	1100	30	1/2
CCF 2 3/4 SB	2.7500	1.5000	1.0000	2 1/4	1 1/8	1-14	9/16	1/8	3/16	1 5/16	1.0003	2250	16450	11720	1100	30	1/2
CCF 3 SB	3.0000	1.7500	1.2500	2 1/2	1 1/4	1 1/4-12	5/8	1/8	1/4	1 3/4	1.2503	3450	24910	15720	850	30	3/4
CCF 3 1/4 SB	3.2500	1.7500	1.2500	2 1/2	1 1/4	1 1/4-12	5/8	1/8	1/4 ²	1 3/4	1.2503	3450	24910	15720	850	30	3/4
CCF 3 1/2 SB	3.5000	2.0000	1.3750	2 3/4	1 3/8	1 3/8-12	11/16	1/8	1/4 ²	1 59/64	1.3753	4200	31625	22800	800	30	3/4
CCF 4 SB	4.0000	2.2500	1.5000	3 1/2	1 1/2	1 1/2-12	3/4	1/8	1/4 ²	2 9/32	1.5003	5000	44770	29985	700	30	3/4
CCF 5 SB	5.0000	2.7500	2.000	5 1/16	2 9/16	2-12	7/8	3/16	1/4 NPT	2 7/8	2.0003	5000	67950	46575	650	48	7/8
CCF 6 SB	6.0000	3.2500	2.500	6	3	2 1/2-12	1	3/16	1/4 NPT	3 3/8	2.5003	5000	80450	60000	600	56	1
CCF 7 SB	7.0000	3.7500	3.000	7 11/16	4 1/8	3-12	1 1/4	3/16	1/4 NPT	3 7/8	3.0003	5000	106930	75380	500	60	1 1/4

¹ Clamping torque is based on dry threads. If threads are lubricated, use half of values shown.

² Lubrication hole (F) at bottom of hex hole and 1/4 inch straight drive fitting with ball check supplied, but not installed.