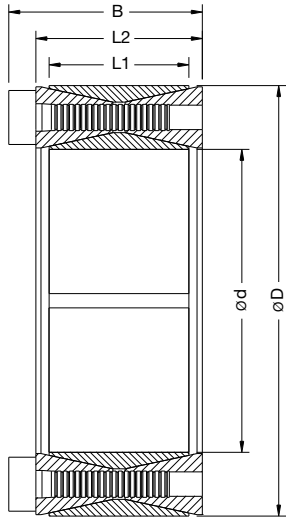
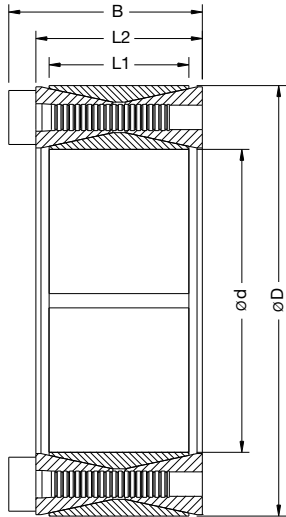


LOCKING ASSEMBLY SELF-RELEASING



					Torque (max.)	Axial Thrust (max.)	Surface pressures on		Tightening screws		Weight (approx.)	
							Fax	Ps	Ph	DIN 912 12.9		Tightening Torque
d	D	L1	L2	B	Mt	Fax	Ps	Ph	n x type	Ms	Lb	
inch	inch	inch	inch	inch	Lb-ft	Lbf	psi	psi		Lb-ft	Lb	
3/4	0.750	1.850	0.669	0.787	1.083	199	6619	34976	14177	8 x M6	11	0.4
7/8	0.875	1.850	0.669	0.787	1.083	232	6619	29980	14177	8 x M6	11	0.4
1	1.000	1.969	0.669	0.787	1.083	264	6572	26047	13232	8 x M6	11	0.7
1 1/8	1.125	2.165	0.669	0.787	1.083	368	8176	28804	14965	10 x M6	11	0.7
1 3/16	1.188	2.159	0.669	0.787	1.083	388	8157	27223	14973	10 x M6	11	0.7
1 1/4	1.250	2.362	0.669	0.787	1.083	487	9741	30886	16344	12 x M6	11	0.7
1 3/8	1.375	2.365	0.669	0.787	1.083	533	9694	27944	16247	12 x M6	11	0.7
1 7/16	1.438	2.559	0.669	0.787	1.083	647	11242	30996	17411	14 x M6	11	0.9
1 1/2	1.500	2.559	0.669	0.787	1.083	671	11174	29524	17306	14 x M6	11	0.7
1 5/8	1.625	2.953	0.787	0.945	1.319	1174	18055	37431	20599	12 x M8	27	1
1 11/16	1.688	2.953	0.787	0.945	1.319	1215	17989	35912	20524	12 x M8	27	1
1 3/4	1.750	2.953	0.787	0.945	1.319	1260	17989	34630	20524	12 x M8	27	1
1 7/8	1.875	3.150	0.787	0.945	1.319	1344	17923	32202	19170	12 x M8	27	1
1 15/16	1.938	3.150	0.787	0.945	1.319	1386	17878	31086	19123	12 x M8	27	1
2	2.000	3.346	0.787	0.945	1.319	1663	20781	35004	20920	14 x M8	27	1
2 1/8	2.125	3.346	0.787	0.945	1.319	1767	20781	32945	20920	14 x M8	27	1
2 3/16	2.188	3.543	0.787	0.945	1.319	1810	20678	31845	19660	14 x M8	27	2
2 1/4	2.250	3.543	0.787	0.945	1.319	1862	20678	30960	19660	14 x M8	27	2
2 3/8	2.375	3.531	0.787	0.945	1.319	1965	20678	29331	19728	14 x M8	27	2
2 7/16	2.438	3.740	0.787	0.945	1.319	2296	23544	32540	21206	16 x M8	27	2
2 1/2	2.500	3.740	0.787	0.945	1.319	2355	23544	31726	21206	16 x M8	27	2
2 9/16	2.563	3.737	0.787	0.945	1.319	2414	23544	30952	21224	16 x M8	27	2
2 5/8	2.625	4.331	0.945	1.102	1.555	3186	30340	32448	19668	14 x M10	52	3
2 11/16	2.688	4.331	0.945	1.102	1.555	3262	30340	31693	19668	14 x M10	52	3
2 3/4	2.750	4.337	0.945	1.102	1.555	3337	30340	30973	19639	14 x M10	52	3
2 7/8	2.875	4.528	0.945	1.102	1.555	3472	30187	29477	18718	14 x M10	52	3
2 15/16	2.938	4.528	0.945	1.102	1.555	3548	30187	28850	18718	14 x M10	52	3
3	3.010	4.724	0.945	1.102	1.555	3604	30034	28106	17847	14 x M10	52	3
3 1/8	3.125	4.724	0.945	1.102	1.555	3755	30034	26982	17847	14 x M10	52	3
3 1/4	3.250	4.921	0.945	1.102	1.555	4445	34194	29537	19506	16 x M10	52	3
3 3/8	3.375	4.921	0.945	1.102	1.555	4617	34194	28443	19506	16 x M10	52	3
3 7/16	3.438	5.118	0.945	1.102	1.555	4684	34063	27819	18684	16 x M10	52	3
3 1/2	3.500	5.118	0.945	1.102	1.555	4770	34063	27322	18684	16 x M10	52	3
3 5/8	3.625	5.315	0.945	1.102	1.555	5536	38173	29563	20163	18 x M10	52	4
3 3/4	3.750	5.305	0.945	1.102	1.555	5727	38173	28578	20201	18 x M10	52	4
3 7/8	3.875	5.709	1.024	1.299	1.850	6923	44663	29868	20275	14 x M12	94	5
3 15/16	3.938	5.709	1.024	1.299	1.850	7035	44663	29394	20275	14 x M12	94	5
4	4.000	5.843	1.024	1.299	1.850	7147	44663	28395	19809	14 x M12	94	5
4 1/8	4.125	6.102	1.024	1.299	1.850	7322	44374	27877	18844	14 x M12	94	6
4 3/16	4.188	6.102	1.024	1.299	1.850	7434	44374	27457	18844	14 x M12	94	6
4 1/4	4.250	6.102	1.024	1.299	1.850	7544	44374	27057	18844	14 x M12	94	6
4 7/16	4.438	6.496	1.024	1.299	1.850	9002	50713	29616	20231	16 x M12	94	6
4 1/2	4.500	6.496	1.024	1.299	1.850	9129	50713	29204	20231	16 x M12	94	6
4 3/4	4.750	6.496	1.024	1.299	1.850	9636	50713	27667	20231	16 x M12	94	6
4 15/16	4.938	7.087	1.339	1.496	2.047	12455	63061	25310	17634	20 x M12	94	8
5	5.000	7.087	1.339	1.496	2.047	12613	63061	24993	17634	20 x M12	94	8
5 7/16	5.438	7.480	1.339	1.496	2.047	15028	69095	25181	18305	22 x M12	94	9
5 1/2	5.500	7.492	1.339	1.496	2.047	15201	69095	24895	18276	22 x M12	94	9
5 3/4	5.750	7.874	1.339	1.496	2.047	17337	75376	25978	18970	24 x M12	94	9
6	6.000	8.268	1.339	1.496	2.047	19444	81014	26757	19418	26 x M12	94	9
6 7/16	6.438	8.858	1.496	1.732	2.362	23383	90805	25010	18176	22 x M14	144	13
6 1/2	6.500	8.858	1.496	1.732	2.362	23610	90805	24770	18176	22 x M14	144	13
6 15/16	6.938	9.252	1.496	1.732	2.362	27380	98665	25217	18909	24 x M14	144	13
7	7.000	9.252	1.496	1.732	2.362	27626	98665	24992	18909	24 x M14	144	13
7 1/2	7.500	9.823	1.811	2.047	2.677	34441	114803	22420	17119	28 x M14	144	19
7 7/8	7.875	10.236	1.811	2.047	2.677	38592	122510	22786	17530	30 x M14	144	19
8	8.000	10.504	1.811	2.047	2.677	39204	122510	22430	17083	30 x M14	144	19

LOCKING ASSEMBLY SELF-RELEASING



						Torque (max.)	Axial Thrust (max.)	Surface pressures on		Tightening Screws		Weight (approx.)
dxD	d	D	L1	L2	B			Shaft	Hub	DIN 912 12.9	Tightening torque	
mm	inch	inch	inch	inch	inch	Mt	Fax	Psi	Ph	n x type	Ms	Lb
						Lb-ft	Lbf	psi	psi		Lb-ft	
19 x 47	0.748	1.850	0.669	0.787	1.083	199	6519	32633	13779	8 x M6	11	0.4
20 x 47	0.767	1.850	0.669	0.787	1.083	207	6519	32633	13779	8 x M6	11	0.4
22 x 47	0.866	1.850	0.669	0.787	1.083	229	6519	30458	13779	8 x M6	11	0.4
24 x 50	0.945	1.969	0.669	0.787	1.083	273	7194	30458	14504	8 x M6	11	0.7
25 x 50	0.984	1.969	0.669	0.787	1.083	295	7194	29008	14504	8 x M6	11	0.7
28 x 55	1.102	2.165	0.669	0.787	1.083	369	8093	29008	14504	10 x M6	11	0.7
30 x 55	1.181	2.165	0.669	0.787	1.083	391	8093	26832	14504	10 x M6	11	0.7
32 x 60	1.260	2.362	0.669	0.787	1.083	502	9442	29733	15954	12 x M6	11	0.7
35 x 60	1.378	2.362	0.669	0.787	1.083	553	9667	27557	15954	12 x M6	11	0.7
38 x 65	1.496	2.559	0.669	0.787	1.083	686	11016	29008	16679	14 x M6	11	0.9
40 x 65	1.575	2.559	0.669	0.787	1.083	723	11016	27557	16679	14 x M6	11	0.7
42 x 75	1.654	2.953	0.787	0.945	1.319	1165	16861	34084	18855	12 x M8	27	1
45 x 75	1.772	2.953	0.787	0.945	1.319	1254	17086	31908	18855	12 x M8	27	1
48 x 80	1.890	3.150	0.787	0.945	1.319	1320	16636	30458	17405	12 x M8	27	1
50 x 80	1.969	3.150	0.787	0.945	1.319	1379	16861	29008	17405	12 x M8	27	1
55 x 85	2.165	3.346	0.787	0.945	1.319	1763	19783	30458	19580	14 x M8	27	1
60 x 90	2.362	3.543	0.787	0.945	1.319	1925	19783	27557	18130	14 x M8	27	2
65 x 95	2.559	3.740	0.787	0.945	1.319	2368	22031	29008	19580	16 x M8	27	2
70 x 110	2.756	4.331	0.945	1.102	1.555	3393	29675	30458	18855	14 x M10	52	3
75 x 115	2.953	4.528	0.945	1.102	1.555	3614	29450	28282	18130	14 x M10	52	3
80 x 120	3.150	4.724	0.945	1.102	1.555	3835	29450	26107	17405	14 x M10	52	3
85 x 125	3.346	4.921	0.945	1.102	1.555	4647	33272	28282	18855	16 x M10	52	3
90 x 130	3.543	5.118	0.945	1.102	1.555	4868	33047	26107	18130	16 x M10	52	3
95 x 135	3.740	5.315	0.945	1.102	1.555	5827	37543	28282	19580	18 x M10	52	4
100 x 145	3.937	5.709	1.024	1.299	1.850	7191	43838	28282	19580	14 x M12	94	5
110 x 155	4.331	6.102	1.024	1.299	1.850	7855	43613	26107	18130	14 x M12	94	6
120 x 165	4.724	6.496	1.024	1.299	1.850	9810	49683	26832	19580	16 x M12	94	6
130 x 180	5.118	7.087	1.339	1.496	2.047	13165	62048	23931	16679	20 x M12	94	8
140 x 190	5.512	7.480	1.339	1.496	2.047	15636	67893	23931	18130	22 x M12	94	9
150 x 200	5.906	7.874	1.339	1.496	2.047	18070	73962	24656	18130	24 x M12	94	9
160 x 210	6.299	8.268	1.339	1.496	2.047	20947	79808	24656	18855	26 x M12	94	9
170 x 225	6.693	8.858	1.496	1.732	2.362	24782	89025	23931	17405	22 x M14	144	13
180 x 235	7.087	9.252	1.496	1.732	2.362	28544	96893	24656	18855	24 x M14	144	13
190 x 250	7.480	9.843	1.811	2.047	2.677	32969	112855	22481	17405	28 x M14	144	19
200 x 260	7.874	10.236	1.811	2.047	2.677	39459	120948	22481	17405	30 x M14	144	19
220 x 285	8.661	11.220	1.969	2.205	2.913	50523	141630	22481	17405	26 x M16	221	24
230 x 295	9.055	11.614	1.969	2.205	2.913	60808	161189	24656	19580	30 x M16	221	25
240 x 305	9.449	12.008	1.969	2.205	2.913	63430	161189	23931	18855	30 x M16	221	26
260 x 325	10.236	12.795	1.969	2.205	2.913	77444	182096	23931	19580	34 x M16	221	29
280 x 355	11.024	13.976	2.362	2.598	3.406	94776	206825	21756	17405	32 x M18	302	42
300 x 375	11.811	14.764	2.362	2.598	3.406	113289	230430	22481	18130	36 x M18	302	44
320 x 405	12.598	15.945	2.835	3.071	3.957	155256	297873	22481	18130	36 x M20	435	66
340 x 425	13.386	16.732	2.835	3.071	3.957	165951	297873	21756	17405	36 x M20	435	66
360 x 455	14.173	17.913	3.307	3.543	4.567	217359	367564	21756	17405	36 x M22	583	93
380 x 475	14.961	18.701	3.307	3.543	4.567	227980	365316	20305	17405	36 x M22	583	97
400 x 495	15.748	19.488	3.307	4.016	4.567	237421	365318	19580	15954	36 x M22	583	101
420 x 515	16.535	20.276	3.307	4.016	4.567	275847	400162	19580	15954	40 x M22	583	110
440 x 545	17.323	21.457	3.780	4.016	5.118	335590	463109	18855	15229	40 x M24	738	143
460 x 565	18.110	22.244	3.780	4.016	5.118	346653	458612	18130	14504	40 x M24	738	148
480 x 585	18.898	23.031	3.780	4.016	5.118	379843	485590	18130	14504	42 x M24	738	157
500 x 605	19.685	23.819	3.780	4.016	5.118	413034	503574	18130	14504	44 x M24	738	161
520 x 630	20.472	24.803	3.780	4.016	5.118	442536	521559	18130	14504	45 x M24	738	176
540 x 650	21.260	25.591	3.780	4.016	5.118	464663	526055	17405	14504	45 x M24	738	181
560 x 670	22.047	26.378	3.780	4.016	5.118	501541	548536	17405	14504	48 x M24	738	187
580 x 690	22.835	27.165	3.780	4.016	5.118	542107	571017	17405	14504	50 x M24	738	194
600 x 710	23.622	27.953	3.780	4.016	5.118	571609	580010	17405	14504	50 x M24	738	201
620 x 730	24.409	28.740	3.780	4.016	5.118	608487	597995	16679	14504	52 x M24	738	205
640 x 750	25.197	29.528	3.780	4.016	5.118	637989	606987	17405	14504	54 x M24	738	212
660 x 770	25.984	30.315	3.780	4.016	5.118	682243	629468	16679	14504	56 x M24	738	218
680 x 790	26.772	31.102	3.780	4.016	5.118	711745	638460	16679	14504	56 x M24	738	225
700 x 810	27.559	31.890	3.780	4.016	5.118	759687	665438	16679	14504	60 x M24	738	229
720 x 830	28.346	32.677	3.780	4.016	5.118	789189	669934	16679	14504	60 x M24	738	236
740 x 850	29.134	33.465	3.780	4.016	5.118	840818	692415	16679	14504	62 x M24	738	243
760 x 870	29.921	34.252	3.780	4.016	5.118	892448	714896	16679	14504	64 x M24	738	249
780 x 890	30.709	35.039	3.780	4.016	5.118	921950	723888	16679	14504	65 x M24	738	256
800 x 910	31.496	35.827	3.780	4.016	5.118	958828	732881	16679	14504	66 x M24	738	260
820 x 930	32.283	36.614	3.780	4.016	5.118	1010457	750865	16679	14504	68 x M24	738	267
840 x 950	33.071	37.402	3.780	4.016	5.118	1069462	777843	16679	14504	70 x M24	738	273
860 x 970	33.858	38.189	3.780	4.016	5.118	1121091	795827	16679	14504	72 x M24	738	280
880 x 990	34.646	38.976	3.780	4.016	5.118	1172720	813812	16679	14504	74 x M24	738	284
900 x 1010	35.433	39.764	3.780	4.016	5.118	1216974	827301	16679	14504	75 x M24	738	291