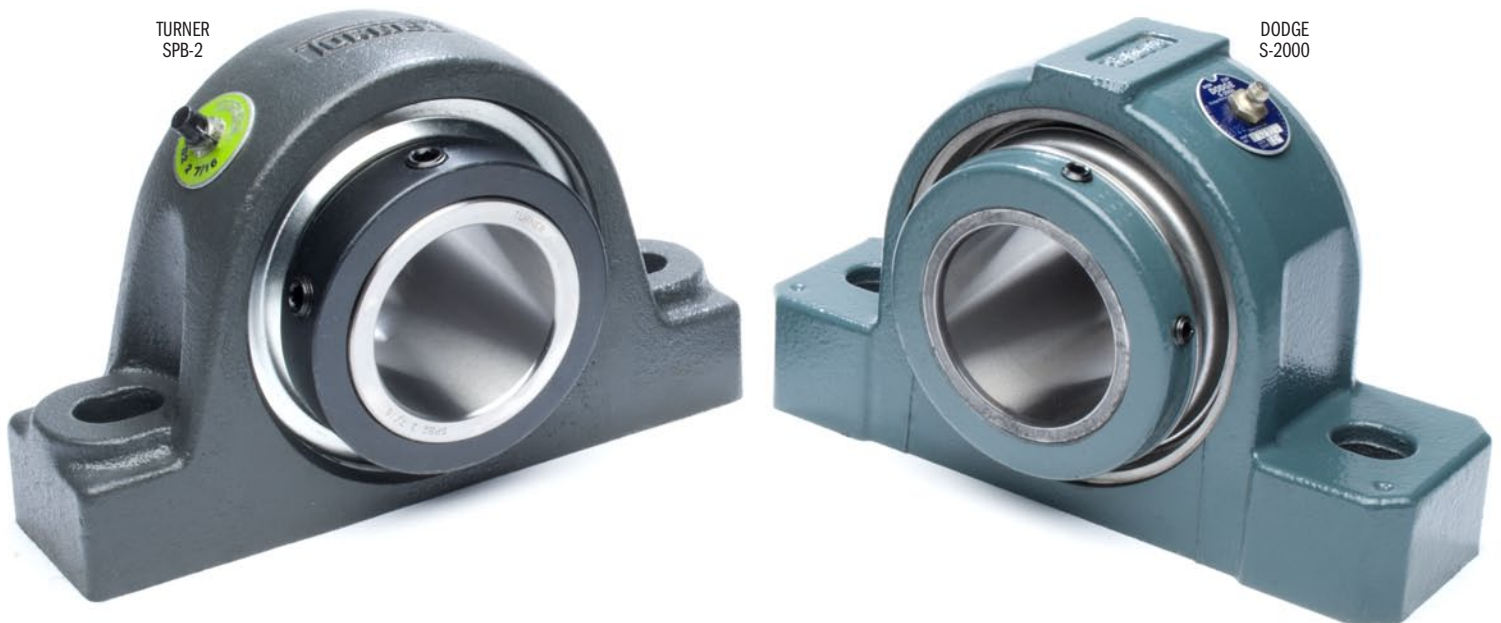


WE KNOW WHICH ONE COSTS MORE.
What we don't know is, why?

Does it have closer tolerances? **NO.**
Does it have higher load ratings? **NO.**
Does it have longer L10 life? **NO.**
Does it have greater maximum speed capacity? **NO.**
Does it have greater misalignment capabilities? **NO.**
Does it provide superior performance in any way? **NO.**
Does it look better? **WE DON'T THINK SO.**



Is there any reason to pass up the savings?
YOU BE THE JUDGE.

www.TurnerBearing.com

TURNER
Mounted Bearings
WORTH MORE.